

Pre-Crimped Wire Mesh

Wire Diameters and Specifications



Pre-crimping wire enables the mesh to lock together, creating a tight weave with good rigidity and pleasing aesthetics. It is used extensively in architectural applications, as infill panels, cages and decoration. It is also used in acoustics, filtration, bridge guards, aerospace parts, rodent control, and truck grills. These products are available in each of 5 types:

Double-Crimp, also referred to as plain weave

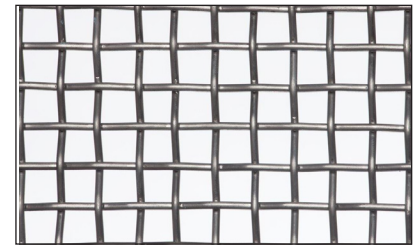
Intermediate Crimp, with wires in every other crimp, the most common and most versatile type

Double & Intermediate Crimp, with all shute wires crimped and warp wires in alternate crimps

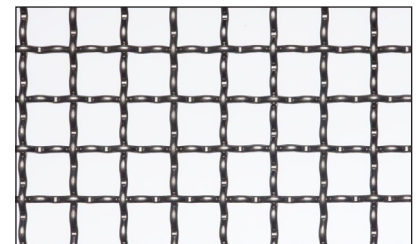
Lock Crimp, a very smooth, tight weave favored by architects

Flat Top Crimp, featuring a looser weave than the other types

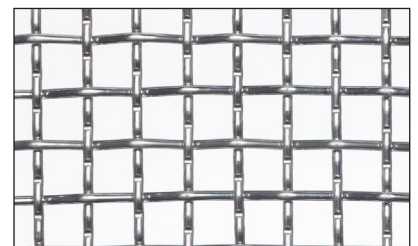
Shown here are the most common wire diameters and sizes of crimped mesh design. Contact us if you need data on a different pattern.



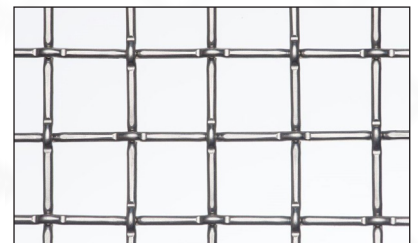
Double Crimp



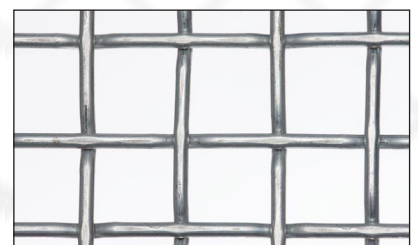
Intermediate Crimp



Double & Intermediate Crimp



Lock Crimp

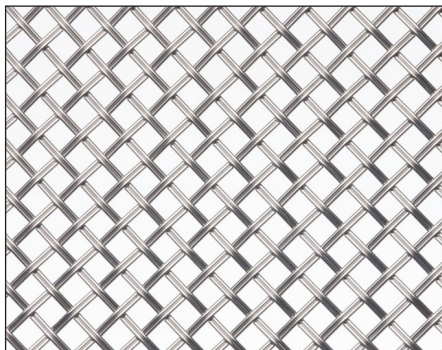


Flat Top Crimp

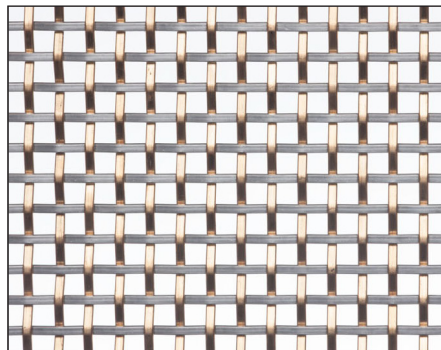
Inch Mesh	Wire Diameter		Open Area %	Weight	
	inches	mm		Lbs/sq. ft.	Kg/m ²
1	0.120	3.048	77.44	0.929	4.536
1	0.135	3.429	74.82	1.178	5.752
1	0.187	4.750	66.10	2.278	11.122
1	0.250	6.350	56.25	4.124	20.135
1.5	0.120	3.048	84.64	0.781	3.813
1.5	0.135	3.429	82.81	1.178	5.752
1.5	0.187	4.750	76.62	2.278	11.122
1.5	0.250	6.350	69.44	4.124	20.135
2	0.120	3.048	88.36	0.462	2.256
2	0.135	3.429	86.96	0.585	2.856
2	0.187	4.750	82.17	1.125	5.493
2	0.25	6.350	76.56	2.016	9.843
3	0.120	3.048	92.16	0.308	1.504
3	0.135	3.429	91.20	0.390	1.904
3	0.187	4.750	87.92	0.748	3.652
3	0.243	6.172	84.46	1.264	6.171
4	0.12	3.048	94.09	0.231	1.128
4	0.135	3.429	93.36	0.292	1.426
4	0.187	4.750	90.87	0.561	2.739
4	0.25	6.350	87.89	1.003	4.897



Shown here are a few examples of the many styles of architectural screen products available from GDW. Please refer to our Architectural brochure for examples of many others. All pre-crimped mesh products are available in stainless (standard) as well as plain steel and galvanized.



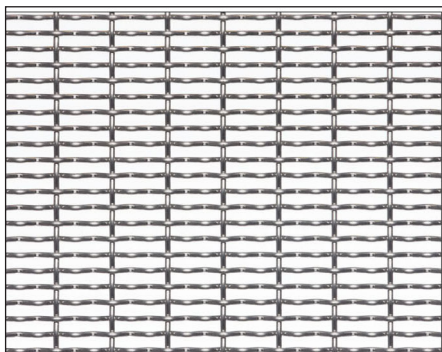
GDW Thatch B2 063
1/4" open mesh diamond cut
Basket weave/double crimp



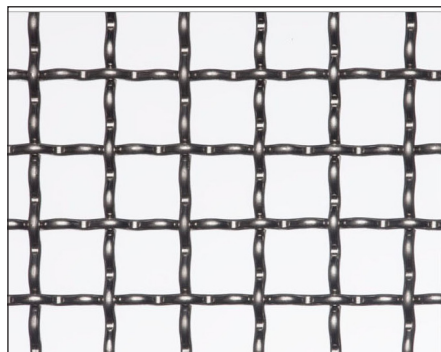
GDW Alegro FW 080
1/4" open mesh
Flat wire double crimp



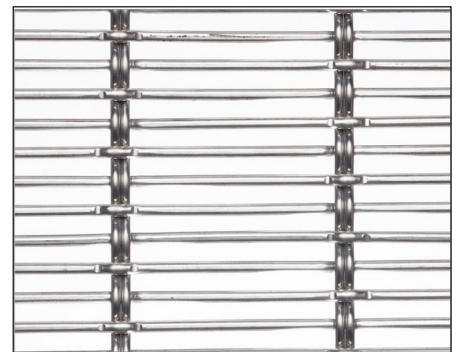
Sienna FT 120
1" mesh
Flat top crimp



Heirloom DL 080
3/4" open x 5 mesh
Smooth lock double crimp



Saphire I 0801
1/2" mesh
Intermediate crimp



Wisteria B2
3" mesh x 1/4" open
Basket